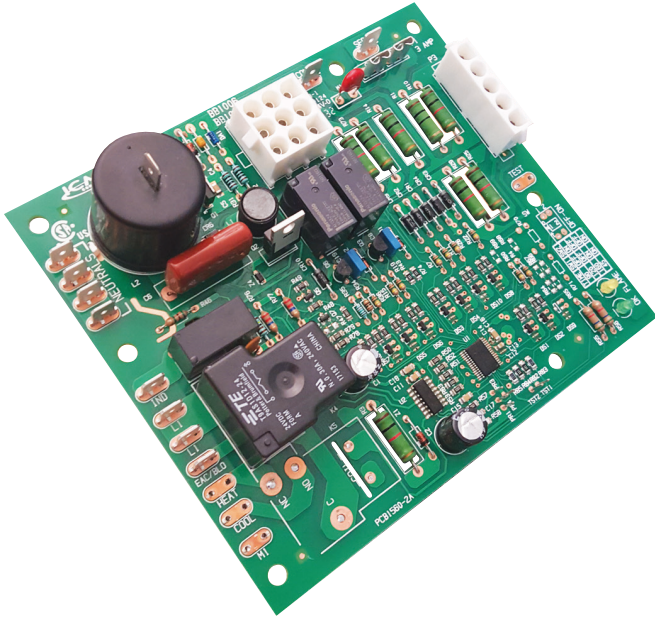




### APPLICATIONS:

APPLIANCE | ELECTRICAL | HVAC/R | MARINE | POOL & SPA | RV



## REPLACES

- Reznor: 195265

## FEATURES

- ✓ Microprocessor-based
- ✓ Controls inducer motor, blower motor, air cleaner (if equipped), spark ignitor and the gas valve
- ✓ Monitors timing, Trial for ignition, system switches, flame sensing and lockout
- ✓ Compatible with LP or natural gas
- ✓ LED indication for status and fault codes to aid in troubleshooting

## SPECIFICATIONS

- **Input**
  - **Voltage:** 18-30 VAC
  - **Frequency:** 60 Hz
- **Output (inducer blower)**
  - **Type:** Relay
  - **Rating:** 1/6 HP @ 125 VAC
- **Gas valves**
  - **Type:** Relay
  - **Rating:** 1A @ 24 VAC
- **Blower**
  - **Type:** Relay
  - **Rating:** 1/4 HP @ 125 VAC

Content and specifications on sell sheets subject to change without notice.