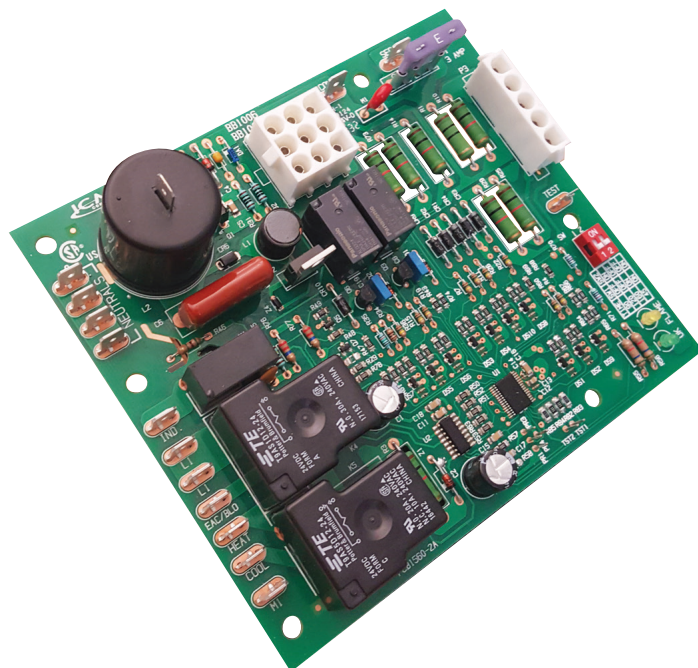




Features

- Direct Spark Ignition (DSI) control board
- Cooling and heating fan outputs
- Microprocessor-based
- Controls inducer motor, blower motor, air cleaner (if equipped), spark ignitor and the gas valve
- Monitors timing, trial for ignition, system switches, flame sensing and lockout
- Compatible with LP or natural gas
- LED indication for status and fault codes to aid in troubleshooting



Specifications

Input

Voltage: 18-30 VAC

Frequency: 60 Hz

Outputs

Inducer blower

Type: Relay

Rating: 1/6 HP @125 VAC

Gas Valves

Type: Relay

Rating: 1A @ 24 VAC

Heat blower

Type: Relay

Rating: 1/4 HP @125 VAC

Cool blower

Type: Relay

Rating: 1 HP @125 VAC

Environmental

Operating Temperature: -40°F to 165°F (-40°C to 74°C)

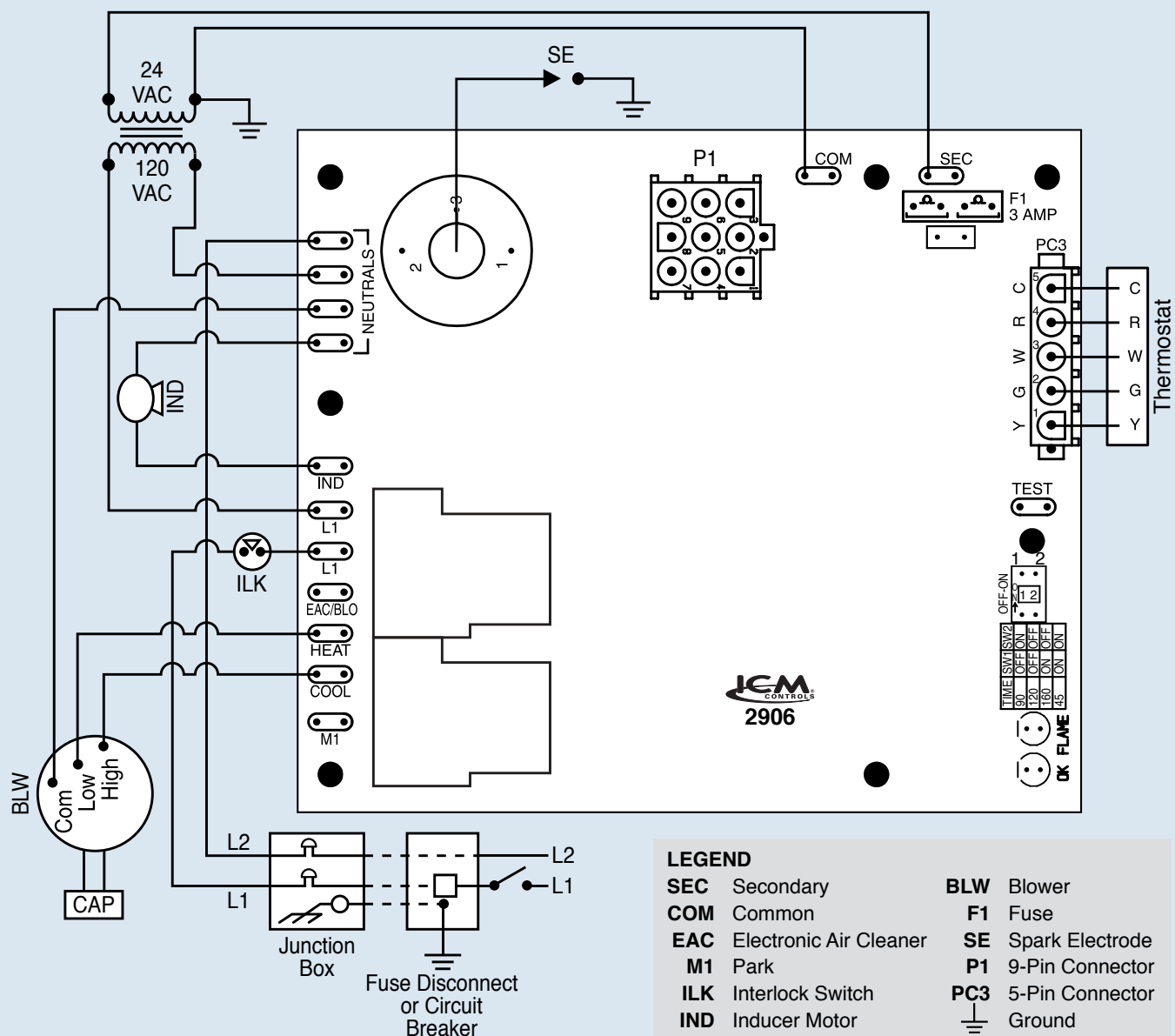
Mechanical

Dimensions: 5" x 5.75"

Replaces

Reznor: 195573

Wiring Diagram



LIT P/N	ICM PART #	SIZE	CREATED BY	ENG SIGNOFF	DATE	ADDED TO DC BY	DATE	DOC ID#