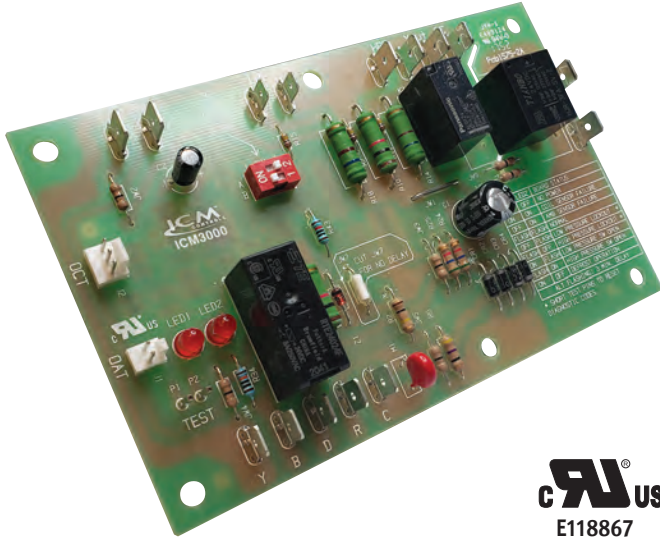




### APPLICATIONS:

APPLIANCE | ELECTRICAL | HVAC/R | MARINE | POOL & SPA | RV



## OVERVIEW

The control will begin the 3 minute time delay upon a Y call from the thermostat. After the time delay expires; the compressor contactor will be energized as long as the high and low pressure switches are closed. If either switch is open after the delay expires; the compressor will not energize and the respective fault code is displayed. If the high pressure cutout (HPC) switch opens while the compressor is energized; the compressor will de-energize immediately and the 3 minute anti-short cycle delay begins.

The low pressure cutout (LPC) switch is bypassed for the first 90 seconds of compressor run time; if the low pressure switch remains open after the 90 second delay; the compressor will de-energize and the 3 minute anti-short cycle delay begins. The compressor will not be allowed to re-energize until the anti-short cycle delay expires and both pressure switches are closed. If either pressure switch opens 3 times during the same Y call; the control will enter a hard lockout and flash the respective code.

## FEATURES

- ✓ Heat active (B) reversing valve logic
- ✓ Sensor input for defrost terminate
- ✓ Time and temperature terminate
- ✓ 14-minute fixed defrost time
- ✓ On-board test pins
- ✓ Input accumulates actual compressor run time
- ✓ Pin-selectable: 50°F, 60°F, 70°F (factory default), 80°F defrost terminate
- ✓ Integral short cycle protection
- ✓ Certified to UL 60730-1 and CSA E60730-1:15

## REPLACES

- **Rheem:** 1157-100, 1157-110, 1157-120, 1157-121, 47-102684-01, 47-102684-02, 47-102684-03, 47-102684-04, 47-102684-08, 47-102685-02, 47-102685-04, 47-102685-05, 47-102685-06, 47-102685-07, 47-21517-22, DDL-122131-2RH
- **White Rodgers:** 47D43-101-90, 47D43-111-01, 47D43-111-02, 47D43-111-03, 47D43-111-04, 47D43-811

## SPECIFICATIONS

### INPUT

- **Voltage:** 18-30 VAC, 50/60Hz
- **OAT (outdoor ambient sensor):** 10kΩ @ 77°F
- **OCT (outdoor coil sensor):** 10kΩ @ 77°F

### OUTPUT

- **CC (compressor contactor):** 1A, 24 VAC, pilot duty
- **RV (reversing valve):** 1A, 24 VAC, pilot duty
- **D (auxiliary heat):** 1A, 24 VAC, pilot duty
- **Fan (outdoor fan):** 2 FLA, 4 LRA, 120 VAC / 240 VAC

### TIME DELAY

- **Defrost:** Fixed at 14 minutes
- **Delay on make:** 3 minutes
- **Anti-short cycle delay:** 3 minutes
- **LPC (low pressure cutout):**
  - Bypassed during the defrost cycle
  - Bypassed for the first 90 seconds of compressor run time
  - Bypassed for 90 seconds after the defrost cycle
- **Operating temperature range:** -22°F to 158°F (-30°C to 70°C)
- **Storage temperature range:** -40°F to 185°F (-40°C to 85°C)
- **Dimensions:** 5.50" x 3.50 x 1.25