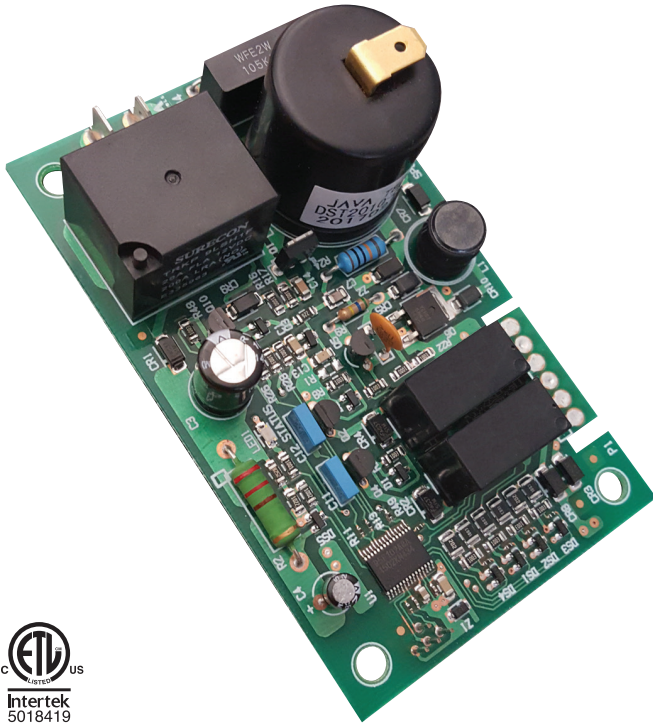




APPLICATIONS:

APPLIANCE | ELECTRICAL | HVAC/R | MARINE | POOL & SPA | RV



REPLACES

- **Suburban:** 521099
- **Fenwal:** 06-236879-002

FEATURES

- ✓ Direct Spark Ignition (DSI) control board.
- ✓ Monitors timing, Trial for ignition, flame sensing and lockout
- ✓ Status LED for fault codes to aid in troubleshooting
- ✓ Microprocessor-based precision
- ✓ Designed for 100% gas shutoff in the case of ignition failure

OVERVIEW

With a thermostat heat call; the **ICM6700** will verify the sail switch is open before energizing the inducer blower, once the inducer blower is energized, the **ICM6700** will verify the sail switch has closed and begin a 15 second pre-purge, after the pre-purge the gas valve and spark ignitor are energized and the **ICM6700** will verify the presence of flame. If flame is detected the spark ignitor is turned off while the gas valve remains energized. Once the thermostat is satisfied; the gas valve is de-energized immediately. After a 90 second post-purge cycle, the inducer blower is turned off.

If flame has not been sensed after 7 seconds; the control will attempt 2 more trials for ignition, if flame is not sensed after 3 trials for ignition, the **ICM6700** will enter a 1-hour lockout.

✱ **Note:** Lockout is cleared by recycling the input voltage.

SPECIFICATIONS

- **Voltage:** 12 VDC
- **Current draw:** 100mA maximum
- **Gas valve: N.O.:** 0.5A @ 12 VDC
- **Inducer blower:** 3.7A @ 12 VDC
- **Trial for ignition:** 7 seconds
- **ON delay:** 15 seconds
- **OFF delay:** 90 seconds

Content and specifications on sell sheets subject to change without notice.