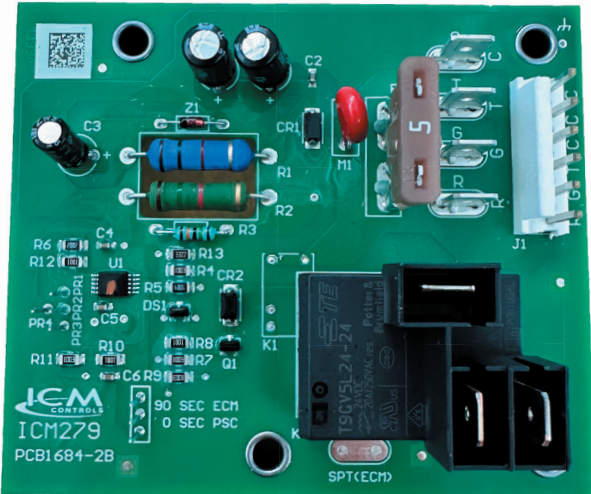




Scan to see a full specifications, installation and agency certification information.

APPLICATIONS:

APPLIANCE | ELECTRICAL | HVAC/R | MARINE | POOL & SPA | RV



FEATURES

- ✓ Form, fit, and functional replacement for Carrier HK61EA006 and HK61EA002 boards
- ✓ Heavy duty output relay for inductive loads
- ✓ Purges ducts of residual air
- ✓ Integral short cycle protection

SPECIFICATIONS

- **Voltage:** 18-30 VAC
- **Contact ratings:**
 - 2HP @ 277 VAC*
 - 1HP @ 125 VAC
 - 2A Pilot Duty at 250VAC

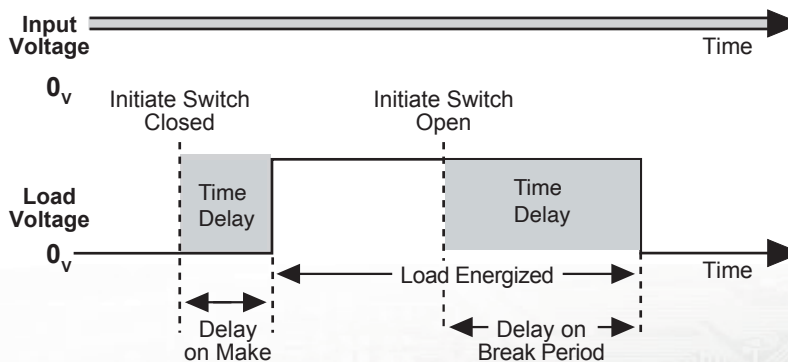
*when used in a system with a Listed Type 1, 2 or 3 SPD with a MCOV at least equivalent to the line-to-line voltage of the input system.

- **Time delays:**
 - ON Delay: 1 second
 - OFF Delay: 90 seconds (w/o jumper)

MODE OF OPERATION

Upon application of power to the G terminal, the ICM279 recognizes a call for the blower and a 1 second delay on make period begins. After the 1 second ON delay, the control energizes the blower motor. Upon removal of power from the G terminal, the board will keep the blower on for an additional 90 seconds (if not jumper is installed). At the end of the 90 second OFF delay, the blower will shut off.

TIMING DIAGRAM



REPLACES

- **Carrier:** HK61EA006 and HK61EA002

Content and specifications on sell sheets subject to change without notice.