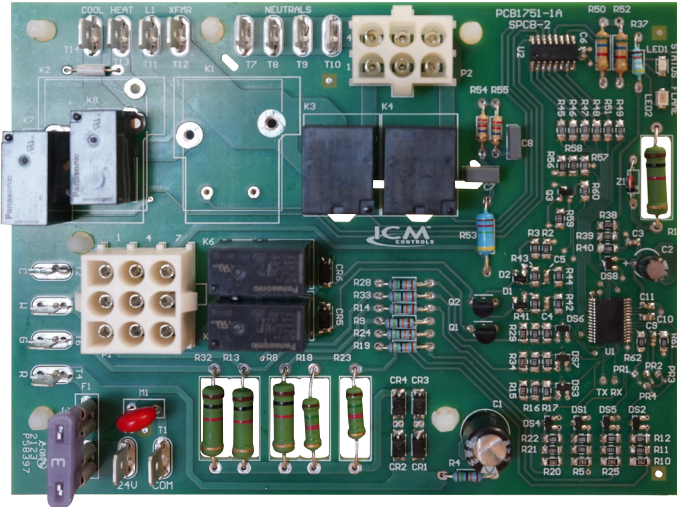


### APPLICATIONS:

APPLIANCE | ELECTRICAL | HVAC/R | MARINE | POOL & SPA | RV



### REPLACES

- Nordyne: 1021575R

### FEATURES

- ✓ Controls furnace operation including the function of the induced draft blower, circulating blower, ignition sequence, gas valve, and flame sense.
- ✓ Monitors system safeties to properly lock out operation when there is a safety fault
- ✓ Detects and communicates faults using diagnostic LED to aid troubleshooting.
- ✓ Form, fit, and functional replacement for the OEM boards listed as a cross.
- ✓ ECM blower output

### SPECIFICATIONS

- **Input:** 120 VAC, 60 Hz
- **Control Voltage:** 18-30 VAC
- **Inducer:** 1/100HP (0.69A) @ 120V, 60 Hz
- **HSI:** 6.0A @ 120 VAC, 50/60 Hz (resistive)
- **Gas Valve:** 0.5A @ 24 VAC, 50/60 Hz (resistive)