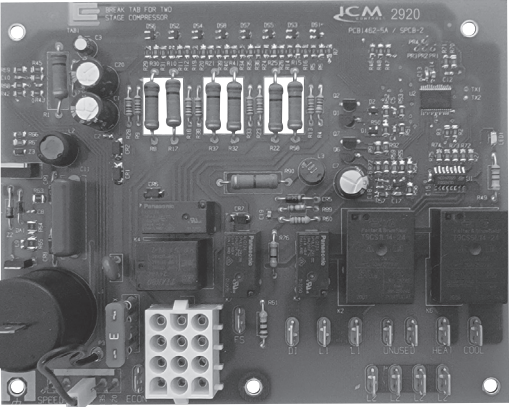




ICM2920

Integrated Furnace Control Board



Installation, Operation & Application Guide

For more information on our complete range of American-made products – plus wiring diagrams, troubleshooting tips and more, visit us at www.icmcontrols.com

Introduction

The **ICM2920** is a form, fit, and functional replacement for the boards shown in the cross-reference section of this guide. The **ICM2920** is an automated gas ignition control board which monitors the ignition sequence including the inducer, pressure switch, spark ignition, gas valve, flame sense, and circulating blower while maintaining full safety circuit monitoring including the high limit switch, roll out switch and auxiliary limit switch circuits. Onboard diagnostics will indicate when a fault condition exists.

Features

- **Controls blower motors, gas valve, & spark ignitor in sequence**
- **Powers a cooling compressor & protects against short-cycling**
- **Selectable heat blower off-delay time**
- **Control can be used for 2-stage cooling by removing a tab**
- **Flash codes from the onboard LED indicate specific problems for easier troubleshooting**
- **Repeated ignition failures or flame losses will disable heat operation for safety**

Specifications

Input

- **Line voltage:** 24 VAC (RMS)
- **Control voltage:** 18 – 30 VAC (RMS), 0.15A max.
- **Frequency:** 50/60Hz
- **Fuse rating:** 3 A

Output

Relay:

- **Heat/Cool N.O.:** 24 VAC
- **Heat/Cool N.C.:** 24 VAC
- **Inducer:** 24 VAC
- **Gas valve:** 1.5A @ 24VAC pilot duty
- **Compressor contactor:** 1.0 A @ 24 VAC

Environmental

- **Operating temperature:** -40°C to 80C (104°F to 176°F)
- **Storage temperature:** -40°C to 85C (104°F to 185°F)
- **Humidity:** 5% - 95% R.H. (non-condensing) at +55°C

Mechanical

- **Dimensions:** 6.50” L x 5.15” W x 3.00” D

Replaces

Goodman: PCBAG123, PCBAG123S Direct Spark Ignition Controls

Mode of Operation

When a call for heat is made by connecting the W and R terminals, the control runs through the following sequence to start the furnace:

- Ensure pressure switch is initially open
- Turn draft inducer motor on
- Wait for pressure switch to close
- Enact a 15-second pre-purge delay
- Energize gas valve, then spark ignitor
- Prove the Flame through the sensor
- Spark ignitor stops, gas stays on
- Enact a 30-second heat blower on delay
- Turn on the heat blower

When the W call is removed, the cycle ends normally as follows:

- Gas valve deactivates immediately
- Inducer turns off after a 30 second post-purge delay
- Heat blower deactivates after the delay selected by the delay jumper pins, either 150, 135, or 120 seconds

Electrostatic Discharge (ESD) Precautions

CAUTION! *Use caution when installing and servicing the furnace to avoid and control electrostatic discharge; ESD can impact electronic components. These precautions must be followed to prevent electrostatic discharge from hand tools and personnel. Following the precautions will protect the control from ESD by discharging static electricity buildup to ground.*

1. *Disconnect all power to the furnace. Do not touch the control or the wiring prior to discharging your body's electrostatic charge to ground.*
2. *To ground yourself, touch your hand and tools to a clean, metal (unpainted) furnace surface near the control board.*
3. *Service the furnace after touching the chassis. Your body will recharge with static electricity as you shuffle your feet or move around, and you must reground yourself.*
4. *Reground yourself if you touch ungrounded items.*
5. *Before handling a new control, reground yourself, this will protect the control. Store the used and new controls in separate containers before touching ungrounded objects.*
6. *ESD damage can also be prevented by using an ESD service kit.*

Remove Existing Control

CAUTION!
To service control, and prior to disconnection, label all wires. Failure to do so may result in wiring errors which can cause dangerous operation.

1. Turn thermostat to OFF position or set it to the lowest possible setting.
2. Turn OFF electrical supply to furnace.
3. Turn OFF gas supply to furnace.
4. Remove furnace blower and control access doors.
5. Remove control box cover.

CAUTION!
Failure to turn off gas and electric supplies can result in explosion, fire, death, or personal injury.

6. Disconnect thermostat wires and humidifier wires (if equipped with a humidifier).
7. Disconnect line voltage, blower, electronic air cleaner wires (if equipped), and transformer wires.
8. Remove wiring harness from circuit board.
9. Remove screws or any other fasteners and old circuit board.
10. Examine control and control box to check for water stains.
11. Make repairs if any sources of water leakage are found. Be sure to check humidifiers, evaporator coils, and vent systems in the area of the control.

Install New Control

1. Ground yourself properly before installing the new **ICM2920** control board.
2. Mount the new control using any screws and fasteners previously removed.
3. Connect all line/low voltage, accessory, thermostat and ground wires.
4. Verify the sequence of operation.

Timing Specification

Heat Operation	
Pre-purge	15 seconds
Blower ON	30 seconds
Post-purge	29 seconds
Blower OFF (adjustable)	120/135/150 seconds
Ignition trial	7 seconds
Inter-purge (purge time between trials)	15 seconds
Ignition activation period	5 seconds
Flame establishing period	2 seconds
Flame failure response time	0.8 (max) seconds
Number of trials	3 trials

Hi-Speed Fan	
Blower ON	7 seconds
Blower OFF	60 seconds

Cooling Operation	
Blower ON	7 seconds
Blower OFF	60 seconds
Compressor anti-short-cycle*	180 seconds
Compressor delay ON make*	60 seconds

- * *Compressor delay selected with breakaway configuration tab Intact = 3 minutes anti-short-cycle*
- * *Compressor delay selected with breakaway configuration tab broken = 60 seconds delay on make*

Blower Timing Select

Blower Off Delay Jumper

When in heat mode, the heat blower turns off 120, 135, or 150 seconds after a W call ends, depending on the position of the jumper. If the jumper is disconnected, the control defaults to 150 seconds.

Breakaway Tab For Cooling Anti-Short Cycle Delay

When the breakaway tab is left intact, the control introduces an anti-short-cycle delay between cooling calls. Hence, once the compressor is deactivated, it will not activate again for 180 seconds.

Speed Up Jumper

If the speedup pins are jumped at power-on time, the unit will bypass the compressor anti-short-cycle delay and energize the compressor if a Y call is in place. If a delay is already in progress when the connection is made, the board will ignore the remaining time and the compressor contactor activates immediately. When the tab is removed, the control waits 60 seconds after a Y call is made before activating the compressor. Any G calls will activate the cool blower instead of the heat blower.

Lockout

Repeated faults will disable heat operation for safety and the unit will enter lockout mode. While in lockout, fan & cooling modes operate differently depending on the cause of the lockout. The control will activate the heat blower & inducer during lock out. The lockout mode will automatically reset after 1 hour, or when 24 VAC power is removed for at least 3 seconds.

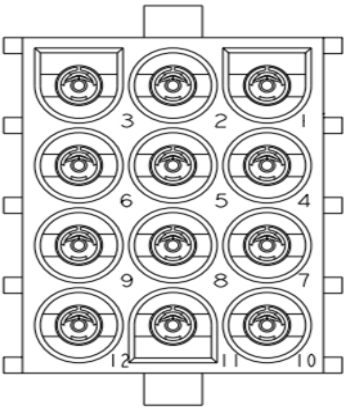
Fault Code Table For Status LED

Flashes	Fault Condition
Steady ON	Control OK in standby, heat, cooling, or fan modes
Steady OFF	No power, or miswired gas valve
1	Lockout due to flame loss or ignition failure
2	Open pressure switch
3	Pressure switch closed with inducer off
4	Open limit switch
5	Flame detected with gas valve closed
6	Compressor output delayed by anti-short cycle/staging timer

Troubleshooting

Problem	Solution
Thermostat interference	There are some thermostats which can interfere with the way the ICM furnace boards sense the call for heat. If you are having any issues with establishing flame, the first step would be to remove all the thermostat wires from the board and temporarily jump R – W to test. If the furnace cycle completes, remove the jumper, and replace the existing thermostat with a battery-operated thermostat or a hardwired thermostat which uses a R & C connection.
Flame Loss	Flame out is considered when flame is lost during heating. <ul style="list-style-type: none">• 5 flame losses in a single heat call will put the control into a one-hour lockout and the control will flash code 1 on the status LED for the duration of lockout.• Removing the W call for more than 3 seconds clears lockout, and the control will respond to heat and cooling calls again. If the W call stays in place for 1 hour, lockout will clear automatically, and the heat cycle will start.
No flame/ Ignition failure	<ul style="list-style-type: none">• If the flame is not established and proved during the 2 second initial sequence, there will be two more successive attempts allowed each having a 15 second inducer purge between attempts.• After three successive attempts, if flame is still not proven there will be a 1 hour lock out before the system will try for ignition again.
Flame out of sequence	Flame out of sequence represents a scenario when flame is sensed while W signal is not present. <ul style="list-style-type: none">• The control goes into a 1-hour lockout when flame is out of sequence and the indicator LED blinks 5 times. To reset the lockout, the 24 VAC power must be removed for 3 seconds.• Inducer and blower motors will be engaged (if not already running) and keep running for as long as the fault condition is present.

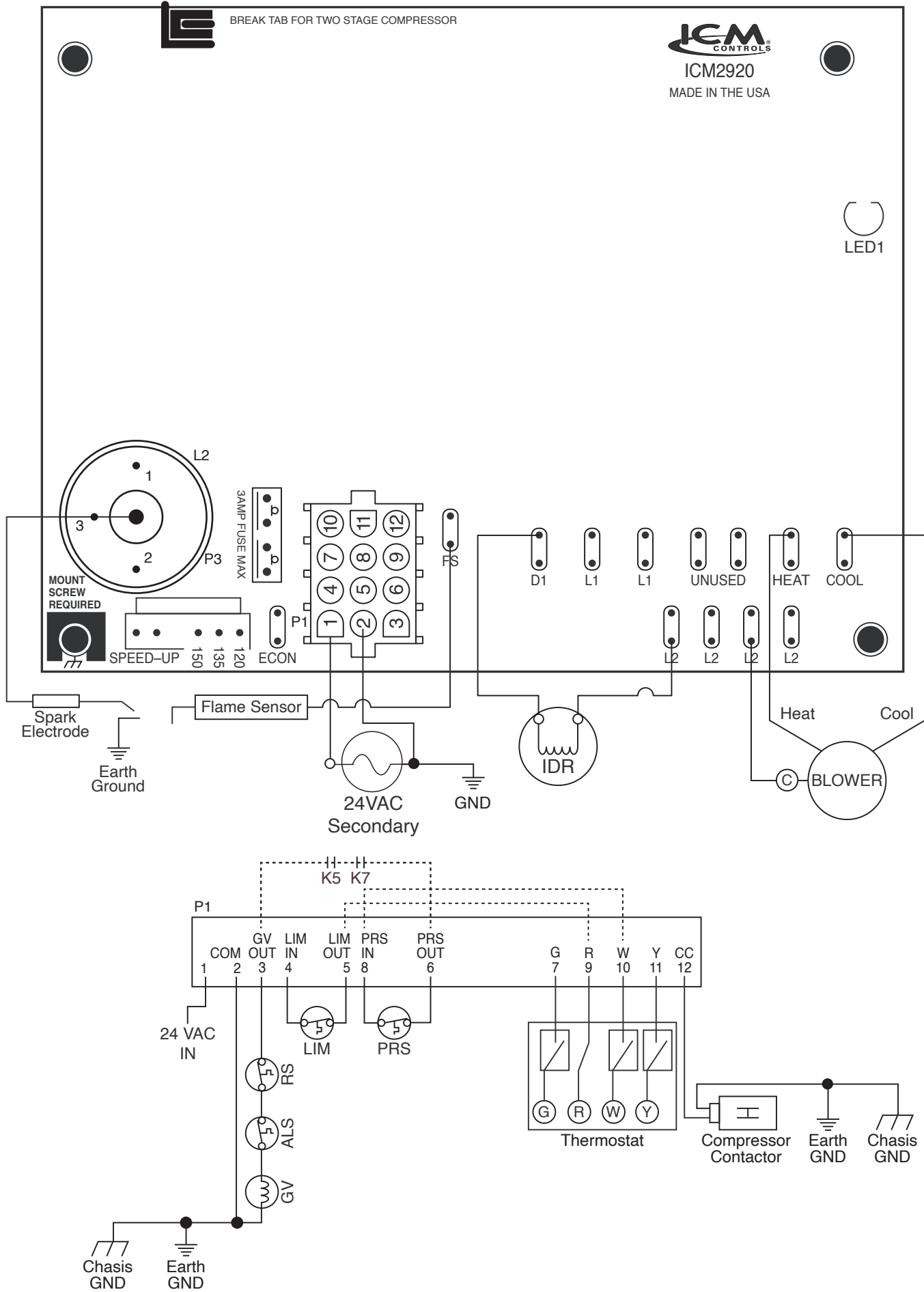
Pin Socket Pinout



Legend:

1. 24 VAC HOT from transformer
2. 24 VAC COM/chassis ground
3. Gas valve out
4. Limit switch in
5. Limit switch out
6. Pressure switch out
7. Thermostat G in
8. Pressure switch in
9. Thermostat R out
10. Thermostat W in
11. Thermostat Y in
12. Compressor contactor out

Wiring Diagram



Legend	
RS	Roll Out Switch
LIM	Limit Switch
ALS	Auxillary Limit Switch
GV	Gas Valve
PRS	Pressure Switch
CC	Compressor Contactor
IDR	Inducer Motor Relay
CAP	Capacitor
ECON	Economizer
FS	Flame Sense
C	Blower Neutral
PRI	Transformer Primary
SEC	Transformer Secondary
GND	Earth Ground
COM	Common

